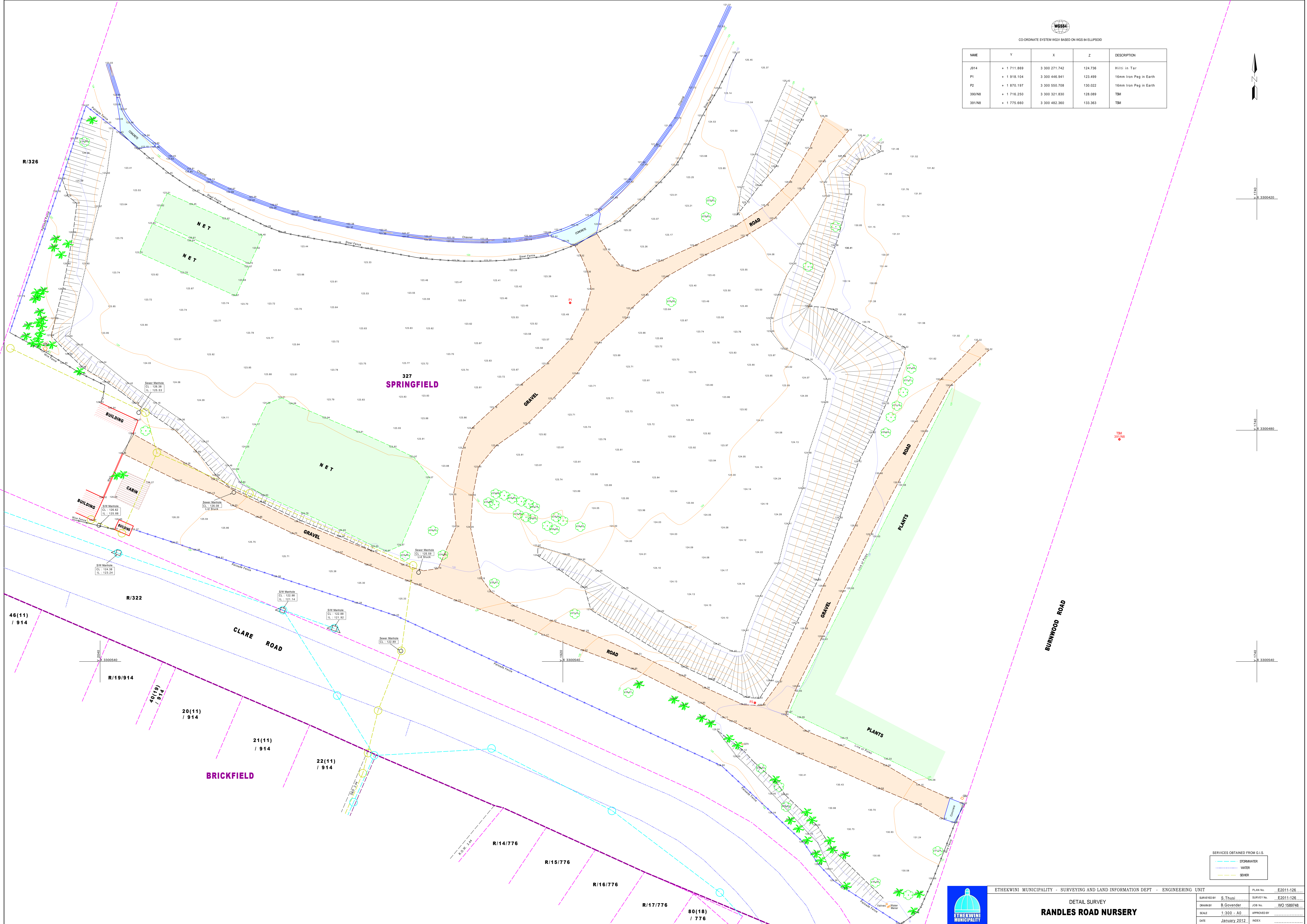
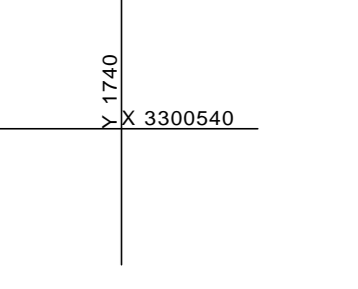
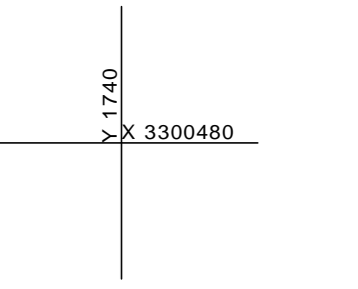
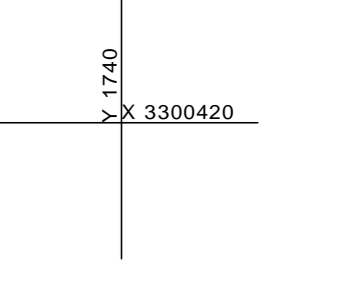
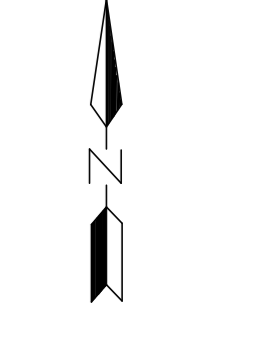




COORDINATE SYSTEM WGS84 BASED ON WGS 84 ELLIPSOID

N/E	Y	X	Z	DESCRIPTION
J914	+ 1 711.889	3 300 271.742	124.736	Hioki in Tar
P1	+ 1 818.104	3 300 446.941	123.499	16mm Iron Peg in Earth
P2	+ 1 870.197	3 300 550.708	130.022	16mm Iron Peg in Earth
390/NB	+ 1 716.250	3 300 321.830	128.089	TBM
391/NI	+ 1 775.660	3 300 482.360	133.363	TBM



SERVICES OBTAINED FROM G.I.S.

STOPMASTER	---
WATER	---
SEWER	---



ETHEKWINI MUNICIPALITY - SURVEYING AND LAND INFORMATION DEPT - ENGINEERING UNIT

DETAIL SURVEY
RANDES ROAD NURSERY

DRAWN BY	S. Thusi	PLAN No.	E2011-126
DATE	1 January 2012	SURVEY No.	E2011-126
SCALE	1:300 - A0	JOB No.	WO 1588/748
INDEX		APPROVED BY	